



Service Bulletin

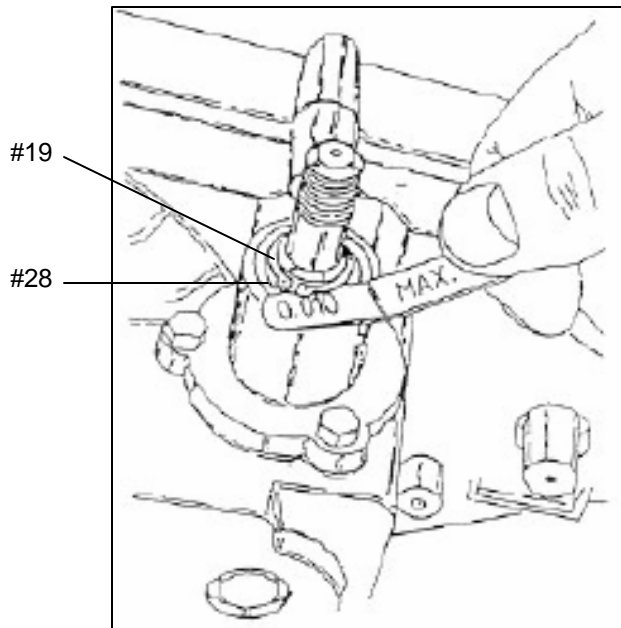
BLN- 52202
Rev. P

PRODUCTS AFFECTED: 210-1000 Axle
Input shaft kit numbers: 62771, 62636, and 62579.

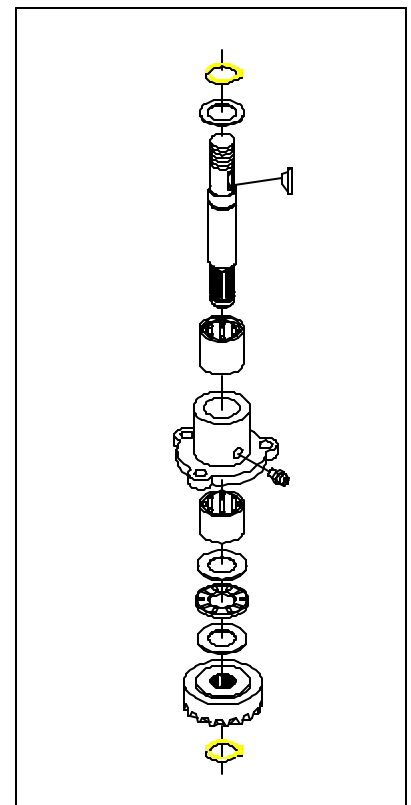
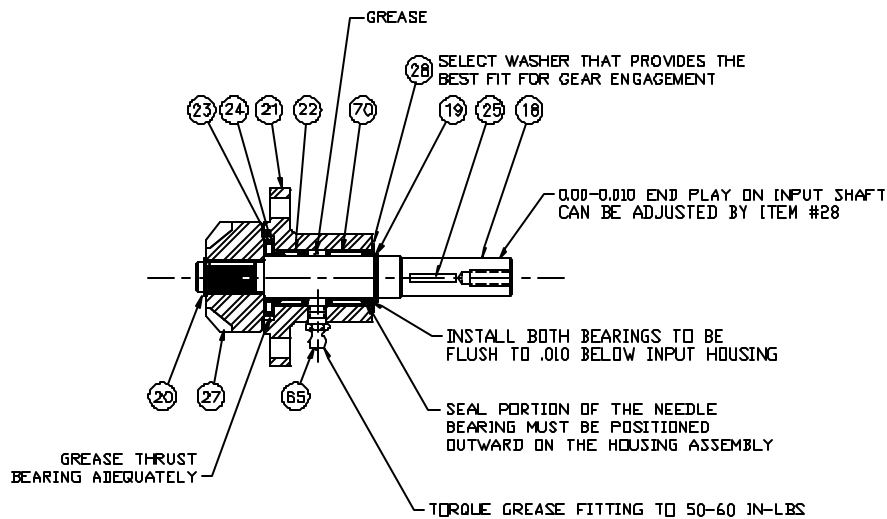
SUBJECT: Assembly of input shaft kit components.

DESCRIPTION: The following information below is provided to correctly assemble the input shaft components.

Note: During installation of item number (28), under retaining ring (19), you must select the washer or washers that provide .010 end play



ITEM	QTY.	DESCRIPTION
18	1	INPUT SHAFT
19	1	RET. RING #5100-62
20	1	RETAINING RING #5100-43
21	1	INPUT HSG.
22	1	BEARING, NEEDLE
23	1	THRUST BRG.
24	2	THRUST RACE
25	1	KEY, HI-PRO 1/8 X 5/8 DIA.
27	1	PINION INPUT 17T
28	1	WASHER, FL .621DX1.0 ODX.050 THK
	AR	WASHER, FL .621DX1 0 ODX.040 THK
65	1	GREASE FITTING
70	1	BEARING, NEEDLE (WITH SEAL)
200	1	BULLETIN



For more technical assistance contact your Hydro-Gear Central Service Distributor.
Part No. BLN-52202
DATE: January 2005