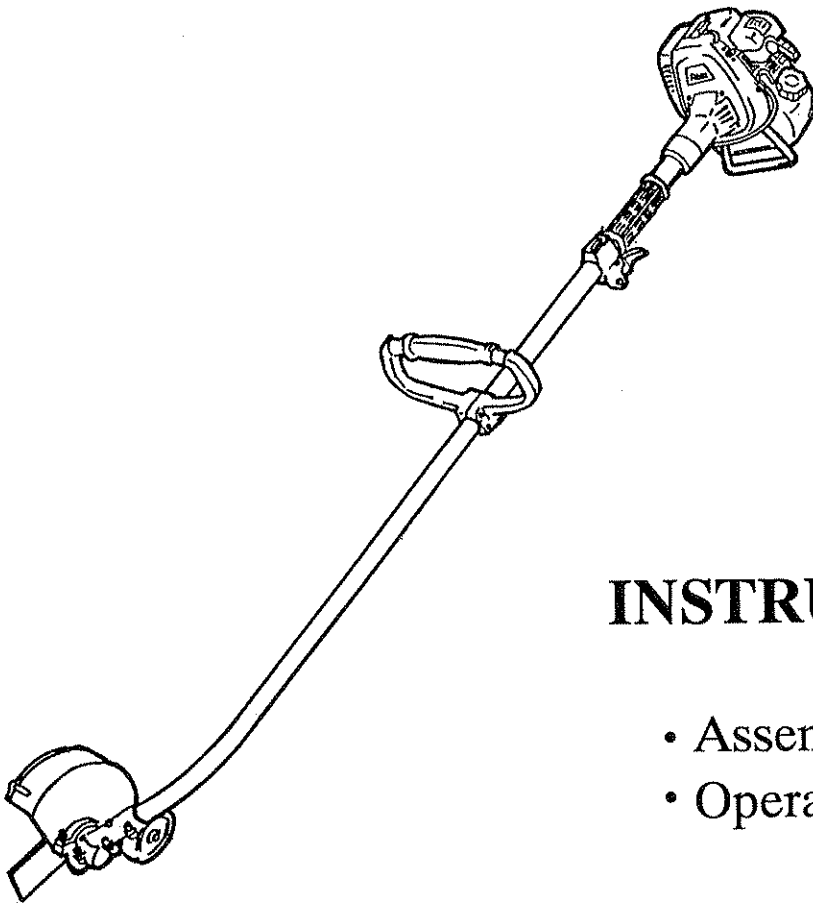




STICK EDGER

MODEL BE26



INSTRUCTION MANUAL

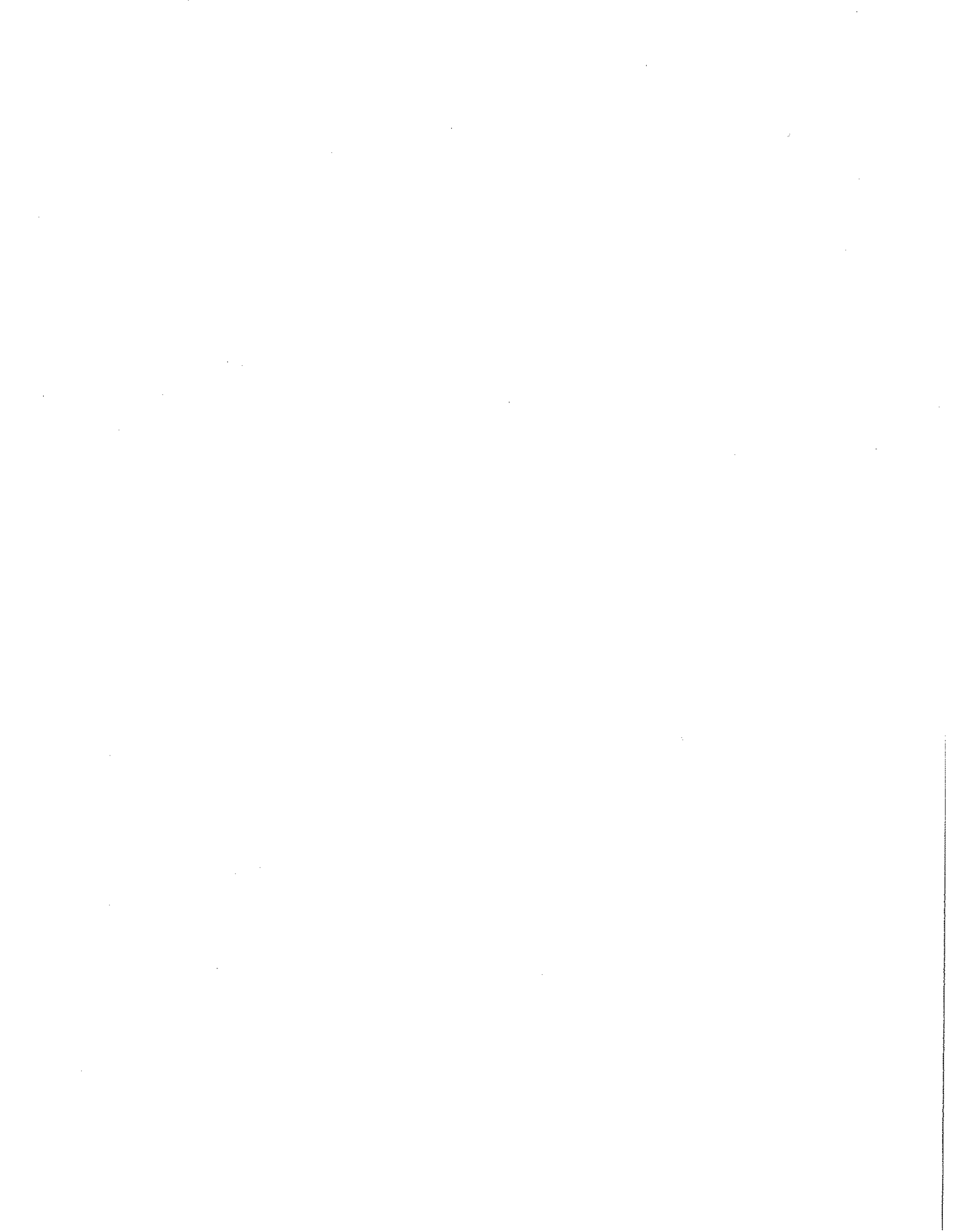
- Assembly
- Maintenance
- Operation
- Repair parts

CAUTION:

Read Rules for Safe Operation and Instructions Carefully



FUJIROBIN INDUSTRIES LTD.



Thank you very much for your patronage in your purchasing ROBIN STICK EDGER We are proud of and much confident in recommending our ROBIN STICK EDGER as the result of our long development and ample knowledge and experiences. This booklet refers to the essence which you should learn in order to demonstrate its outstanding performance. We wish that you will have sufficient knowledge from this booklet before operating ROBIN STICK EDGER and make the best use of it for ever.

CAUTION

- Always stop the engine when a blade jam occurs.
- DO NOT attempt to remove an object causing a blade jam if the engine is running. Physical injury can occur if a blade jam is removed and the blade suddenly starts.
- Keep a firm grip on the edger with both hands, the right hand on the rear handle, the left hand on the front handle. Use a firm grip with thumbs and fingers encircling the handles. A firm grip will help you keep control of the edger.
- NEVER OPERATE the edger with only one hand.
- Never adjust blade height with engine running.
- Before edging, plan your direction of travel so that the unit will always be positioned on your right side and so that you walk on a hard surface whenever possible.

SAFETY RULES AND PRECAUTIONS

Proper safety precautions must be observed. Like all power equipment this unit must be handled carefully. DO NOT EXPOSE YOURSELF OR OTHERS TO DANGER. Follow these simple rules.

1. Always wear safety goggles for eye protection. Dress properly, do not wear loose clothing or jewelry that could become caught in moving parts of the unit. Safe footwear should always be worn.
2. Inspect the entire machine for loose parts. (Nuts, bolts, screws, etc.)
3. DO NOT USE any attachment with this power head other than those manufactured by the manufacturer of the engine. Serious injury to the user or damage to the engine could result.
4. Keep the handles free of oil and fuel.
5. Always use the proper safety handle when cutting.
6. Do not smoke while mixing fuel or filling tank.
7. Do not mix fuel in an enclosed room or near open flames.
8. Always mix and store the fuel in a properly marked container that is approved for such usage.
9. Never remove the fuel tank cap while the engine is running.
10. Never start or run the engine inside a closed room or building. Fumes from the exhaust contain dangerous carbon monoxide.
11. Never attempt to make engine adjustments while the unit is running. Always make engine adjustments with the unit resting on a flat, clear surface.
12. Do not use the unit if it is damaged or poorly adjusted.
13. Inspect the area to be cut and remove all debris that could become entangled in the blade. Also remove any objects that the unit may sling during cutting.
14. Keep children away. Onlookers should be kept at a safe distance from the work area, at least 50 feet.
15. Do not use this unit for any job other than those for which it is intended as described in this manual.
16. Do not overreach. Keep proper footing and balance at all times. Do not run unit standing on a ladder or any other unstable footing.
17. Keep hands and feet clear of the blade while unit is in use.
18. Do not run the unit at high speed when not cutting. During operation, be sure to keep the engine rotation at 6,000 – 10,000rpm (rated rotation: 7,000rpm). If the rotation goes below this limit, grass may be sometimes caught in the blade, which results in wear of the clutch.
19. Do not use the unit when you are tired.
20. Use the blade without any breakage. In particular, whenever it hits at a stone or any other obstacles, stop the engine and check the blade. Any broken blade must not be used. Follow instructions for changing accessories.
21. Do not store in a closed area where fuel vapors can reach an open flame from hot water heaters, furnaces, etc.
22. Use only replacement parts that are identical to original equipment parts when servicing the unit. These parts are available from your dealer. The use of any other accessory or attachment may create a potential hazard.

KNOW YOUR ROBIN STICK EDGER

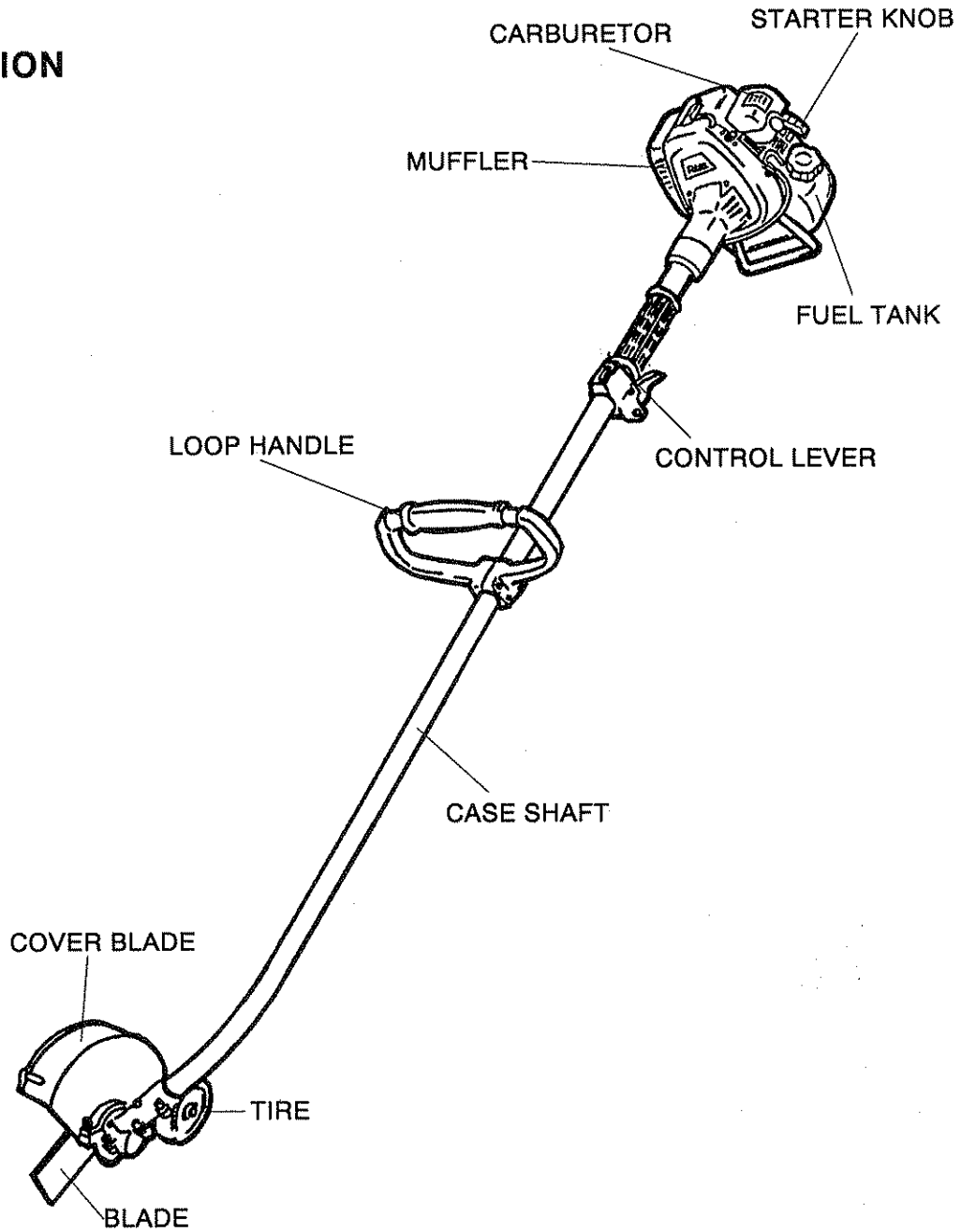
Your new ROBIN STICK EDGER has been carefully packed at the factory to prevent damage during shipping and storage, however, even with the best of preventative measures, damage does sometimes occur. It is recommended that you follow the check up items listed below;

CHECKUP ITEMS FOR SAFETY OPERATION

Prior to operation, be sure to check the following items to permit safe operation of this machine.

	No.	Check up item	Description	Checkup
Common	1	Aspect	By visual inspection, check for flaws, cracks or wears.	
	2	Bolts,nuts	Check for flaws, cracks, wear or loosening.	
Machine body	3	Safety cover	1) Check for flaws, cracks or loosening. 2) Confirm that safety cover is placed in contact with gearcase.	
	4	Gearcase	Confirm that there is no loosened bolts.	
	5	Blade tightening washer	Confirm that there is no wear or warp in tightening washer or support washer.	
	6	Blade tightening nut	Confirm that blade tightening nut is fastened securely.	
	7	Blade	1) Confirm that genuine Robin blade is fitted. 2) Confirm that blade is well sharpened or set well. 3) Confirm that there is no crack or flaw on blade.	
	8	Handle	Confirm that handle – fixing bolts are tightened securely.	
Engine	9	Throttle lever	1) Does throttle lever work regularly? 2) Can engine rpm be adjusted between low high speeds?	
	10	Stop switch	Does engine stop securely?	
	11	Muffler, muffler cover	1) Clean carbon from muffler. 2) Check muffler cover for damage or loosening.	
	12	Holder case	Confirm that holder case – tightening screws are not loosened.	

DESCRIPTION



SPECIFICATIONS

MODEL	BE26	CLUTCH:	Centrifugal
ENGINE TYPE:	ROBIN ECO2F	FUEL TANK:	0.8 Liter
DISPLACEMENT :	25.6cc (1.56cu In)	SPARK PLUG:	NGK – BM7A
OPERATIVE RPM:	6000 RPM	SPARK PLUG CAP:	0.6~0.7MM(.024" ~.028")
STARTER:	Auto Rewind	LUBRICATION:	Fuel – Oil mix Between 20 and 25 to 1
CARBURETOR:	All Position – Diaphragm Type	NOTICE:	For the first twenty hours, use the mixing ratio of between 15 and 20 to 1

NOTICE: The specification is subject to change without notice for the purpose of improvement of the product.

ASSEMBLY INSTRUCTIONS

1. The engine is completely assembled and needs no further assembly other than attaching the pipe shaft.
2. Using the bolts provided, fit pipe shaft to engine. Figure 1.

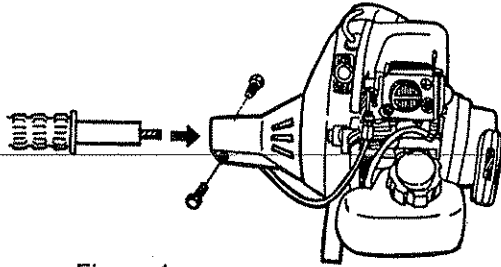


Figure 1

3. Pass the throttle wire grip hole.
4. Set the throttle wire to the throttle shaft through the adjusting screw of the carburetor. Figure 2. ACTION OF THROTTLE LEVER, IT SHOULD MOVE FREELY IN BOTH DIRECTIONS.

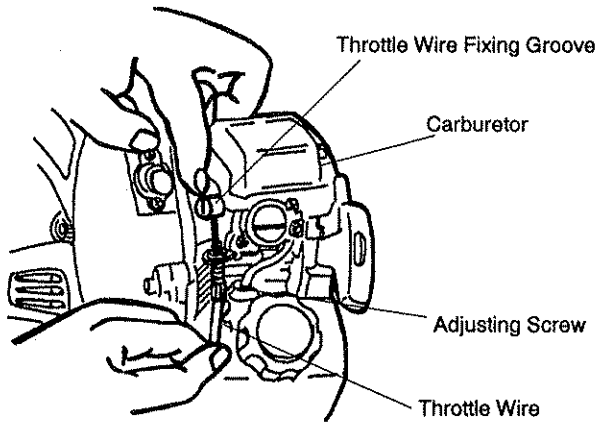


Figure 2

5. After the loop handle is in place, tighten the four bolts. Figure 3. BE SURE THE BOLTS ARE TIGHT, BUT DO NOT OVERTIGHTEN.

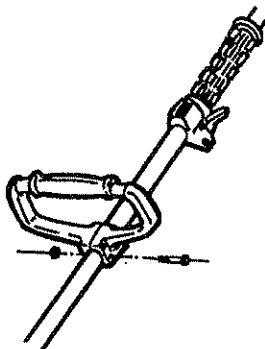


Figure 3

6. Set the blade in regular order as illustrated.
7. Install receive washer to shaft with large side toward blade. Then, install blade, clamp washer, spring washer and nut. Lastly, be sure to install blade by split pin. Figure 4.

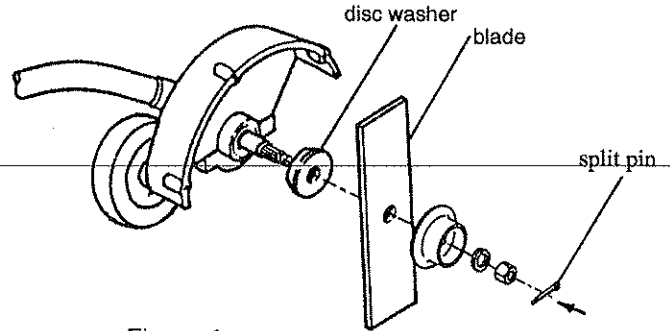


Figure 4

NOTE: NUT IS LEFT HAND THREAD. Figure 5.

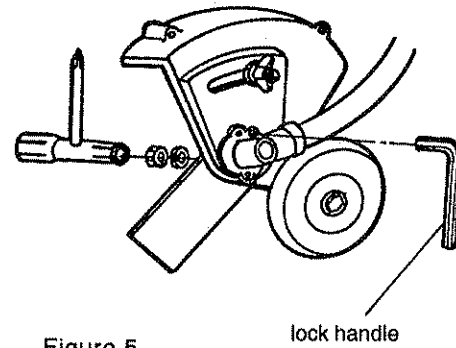


Figure 5

8. Install new split pin to drive shaft. NOTE: NEVER REUSE OLD SPLIT PIN.

PREPARING FOR OPERATION

Fuel and oil mixture

Inspect the fuel tank and fill with clean, fresh fuel of the proper mixture. This engine requires a mixture of gasoline of between 20 and 25 parts gasoline to 1 part oil (1 gal. gasoline to 6 oz. oil) of regular leaded gasoline. For the first twenty hours, use the mixing ratio of between 15 and 20 to 1.

WARNING!WARNING!WARNING!

WHEN MIXING GASOLINE WITH TWO CYCLE ENGINE OIL, USE ONLY GASOLINE WHICH CONTAINS NO ETHANOL OR METHANOL (TYPES OF ALCOHOL), THIS WILL HELP TO AVOID POSSIBLE DAMAGE TO ENGINE FUEL LINES AND OTHER ENGINE PARTS. DO NOT MIX GASOLINE AND OIL DIRECTLY IN THE ENGINE FUEL TANK.

IMPORTANT: Failure to follow proper fuel mix instructions could result in serious damage to the engine.

CAUTION:

When preparing fuel mixture, mix only the amount needed for the job you are to do. Do not use fuel, mixture that has been stored longer than two (2) months. Fuel mixture stored longer than this will cause hard starting and poor performance. If mix has been stored longer than this time it should be removed and filled with a fresh mixture.

CAUTION! NEVER fill the fuel tank to the inlet port level.
NEVER add fuel the tank in a closed un-ventilated area.
DO NOT add fuel to this unit close to an open fire or sparks.
BE SURE to wipe off spilled fuel before attempting to start the engine.
DO NOT attempt to refuel an extremely hot engine.

Check points before operation

CHECK for loose bolts, nuts and fittings.
CHECK the air cleaner for dirt. Clean the air filter of all dirt, etc. before the operation.

OPERATING TECHNIQUES

- Before edging, water the area to soften the ground and make edging easier.
- Before edging, check the area and remove all obstacles and objects that could be thrown.
- Plan to edge regularly to make it easier to keep a neat edge and to avoid having to make more than one pass.

NOTE

Blade depth may have to be adjusted due to differences in height between the hard surface and the top of the grass.

- Adjust the blade's depth of cut to produce a fine cut between sidewalk and grass using a minimum blade depth, usually with about $\frac{1}{2}$ " of the blade into the ground.

NOTE

The blades' depth of cut is adjusted by moving the blade guard.

- Adjust blades' depth of cut by loosening the wing Bolt, moving the guard toward the operator to reduce depth or away from the operator to increase depth, and then retightening the Bolt. Figure 6.

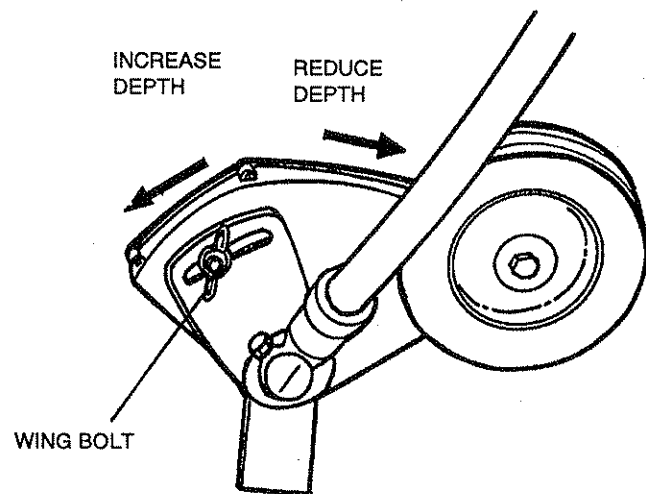


Figure 6

- When starting to edge, run the engine at full throttle, and lower the blade gently into the ground, being careful not to hit the concrete with the blade.
- Don't force the blade rotate more than the normal rotation.

Figure 7.

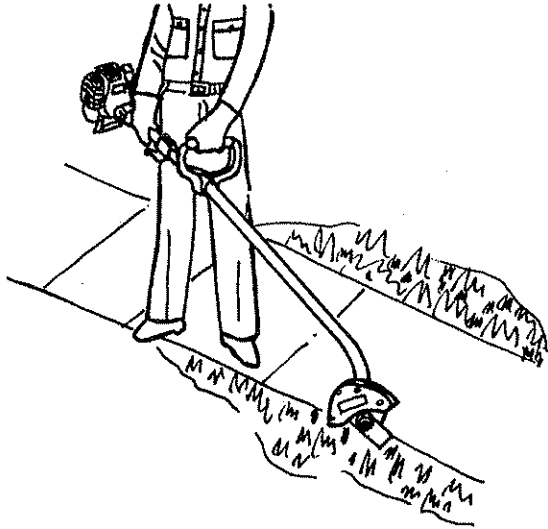


Figure 7

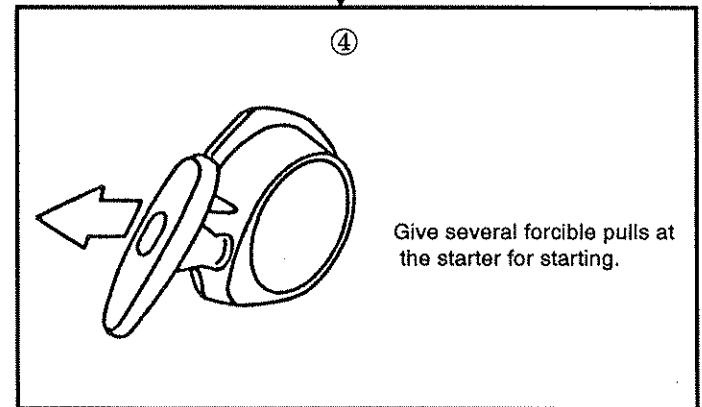
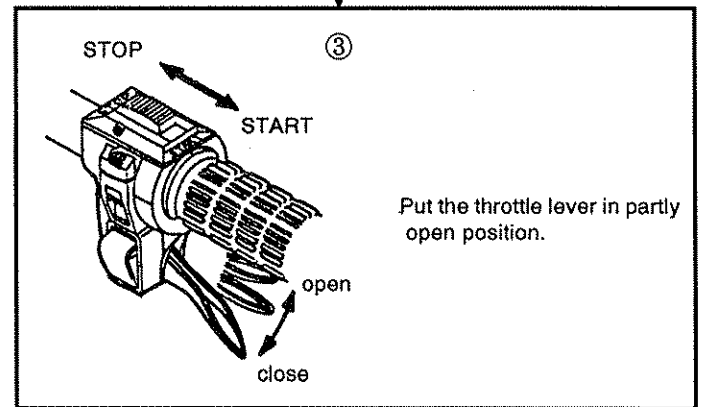
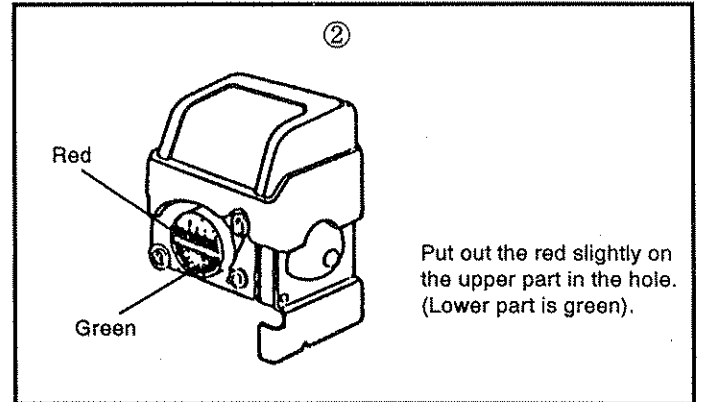
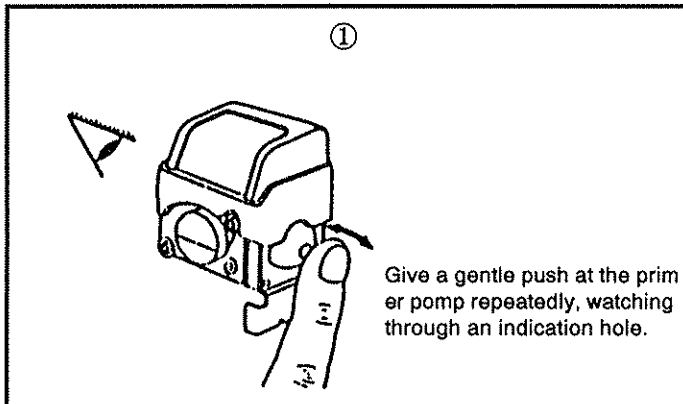
ENGINE STARTING PROCEDURE METHOD OF STARTING THE ENGINE

• After placing machine horizontally on the ground, put the throttle lever in fully close position.

• When the engine is cold; → ① ② ③ ④

• When the engine is warm; → ④

*Note; When the red is put out even a little on the upper part in the hole, do not push the pump any more.



STOPPING ENGINE

1. Release throttle trigger and allow engine to idle.
2. Slide ignition switch to STOP position.
 - Pull the recoil starter briskly.
 - CAUTION; Gradually return the throttle lever... DO NOT LET IT SNAP BACK! Pull the rope in the direction of the starter rotation. DO NOT pull the starter rope all the way out of the drum.
 - Let the engine warm up running it at a low rpm (slow speed) for approximately two or three minutes.

NOTE: DO NOT HAVE THE ENGINE UNDER LOAD DURING THE WARM – UP PERIOD.

CAUTION:

NEVER OPERATE THE ENGINE AT HIGH RPM WITHOUT LOAD. With throttle fully opened and no load, the engine rpm will be very high which can have an adverse effect on the life of the engine.

Adjustments

SPARK PLUG MAINTENANCE – If the spark plug electrode area has an excess of carbon buildup, the efficiency of the plug will be seriously reduced. REMOVE THE CARBON WITH A SPARK PLUG CLEANER OR WIRE BRUSH.

After cleaning the spark plug RESET THE ELECTRODE GAP TO 0.6/0.7MM(0.24" – 0.28").

Carburetor

Proper adjustment of the carburetor is very important to the operation of this engine. The carburetor has been carefully adjusted at the factory and therefore should not require any further adjustment.

Preventative Maintenance Check List and Storage Tips

Be sure the engine and all other parts are clean. Check all nuts, bolts, screws etc. making sure they are tightened and secured as they should be. Inspect carefully for any fuel or oil leaks. Check the air cleaner assembly for excessive dust or dirt. If the filter requires cleaning, use the following procedure: Remove the filter and wash in soap and water or blow off with compressed air. DO NOT clean filter in gasoline or other flammable solvent.

Cleaning Of Cooling Air Line

- Before operation, be sure to check. the clogging of the cooling air inlet, the space between fuel tank and crankcase and cylinder fin, and clean them, if necessary.
- Remove the fan cover periodically to clear its inside of dust and other foreign matter.
- If the engine runs with dust clogged, engine cooling will deteriorates, resulting in malfunction of the engine.

Tips for Long Storage

Drain all fuel from the fuel tank and carburetor. Remove spark plug, pour a teaspoon of oil through the plug hole. Rotate the crankshaft several times by pulling the starter handle slowly. Replace the spark plug and proceed with storage.

Emergency measure during operation

In case of emergency. the machine will be detached from the body.

LUBRICATION

The engine is self lubricating through the fuel mix and therefore does not need additional attention to its lubrication.

However the gear box does require lubrication as a preventative maintenance measure.

Every 30 hours remove bolt from side of gear box and fill with grease. Figure 8

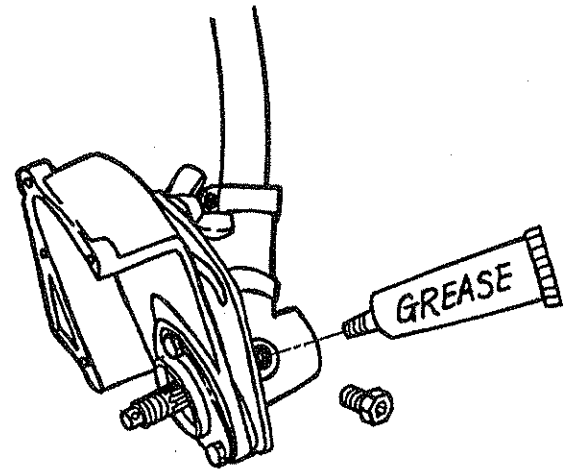
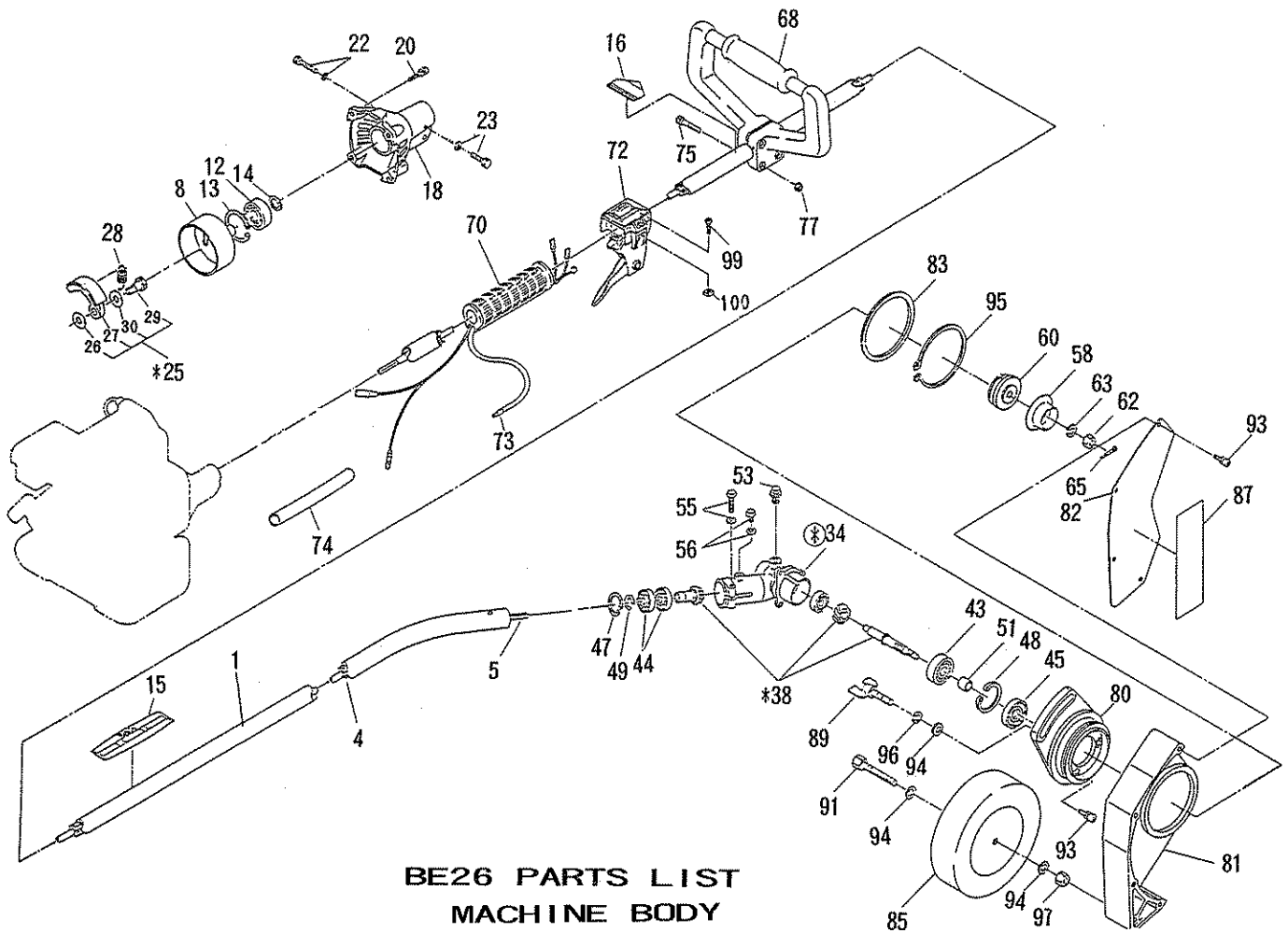


Figure 8

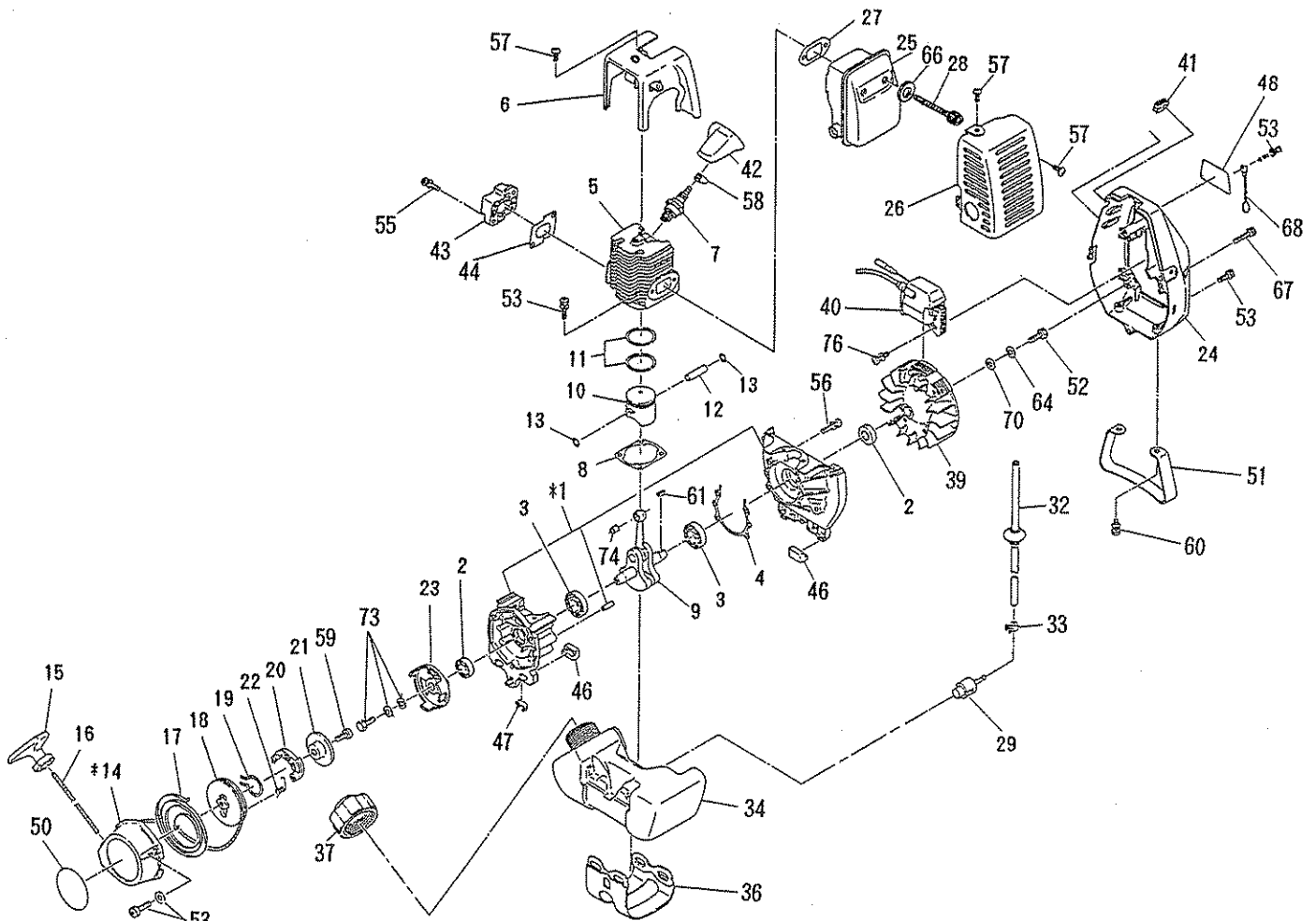
FLEXIBLE SHAFT

After every 30 hours operation replace Grease with new Grease.



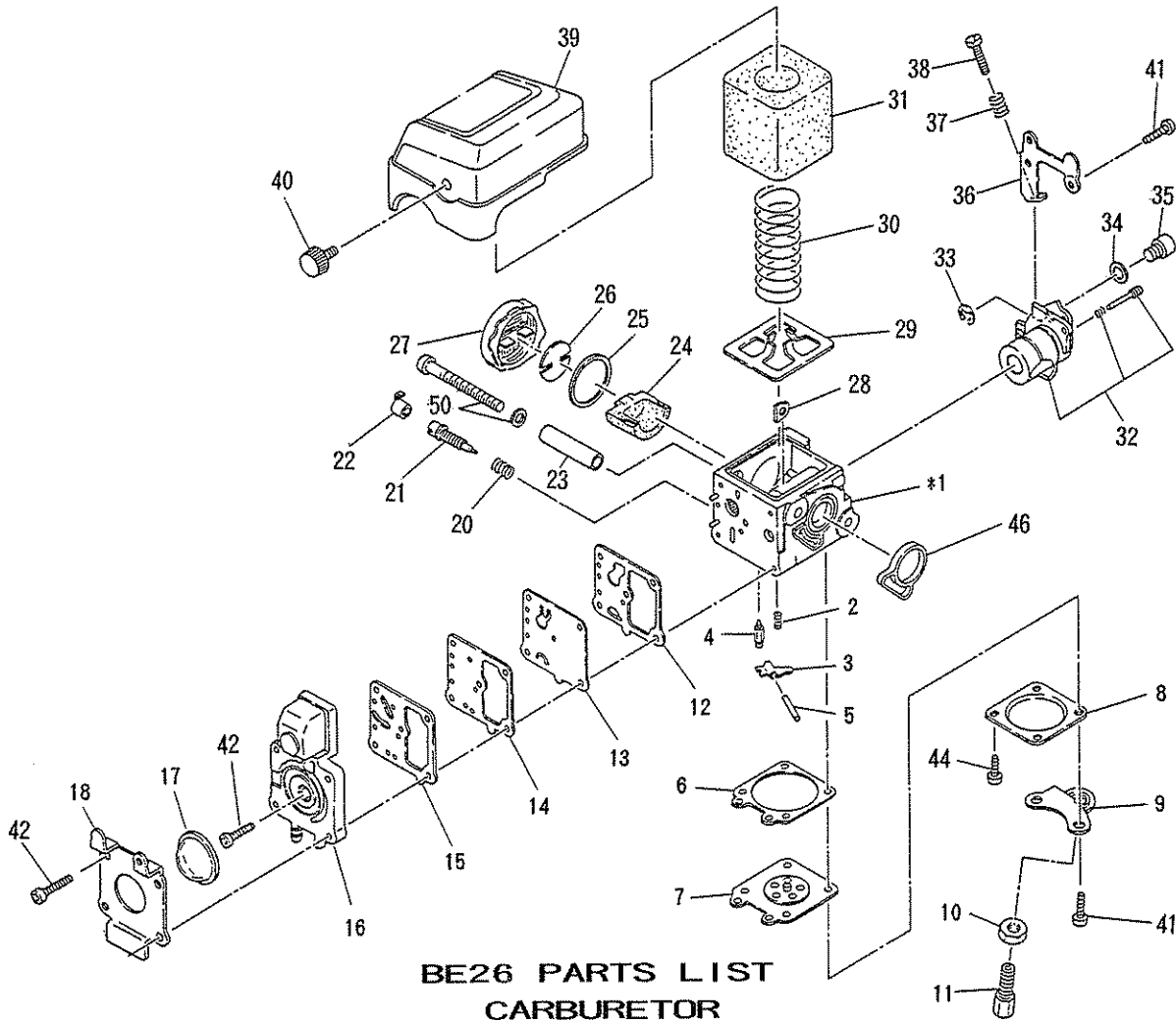
**BE26 PARTS LIST
MACHINE BODY**

KEY No.	PART No.	QTY.	DESCRIPTION	KEY No.	PART No.	QTY.	DESCRIPTION
1	602 10030 00	1	Pipe shaft ass'y	63	0203 08999 0	1	Spring washer
4	602 15003 00	1	Liner	65	00510 2518 0	10	Cotter pin
5	602 15002 00	1	Shaft, flexible	68	621 45000 01	1	Handle
8	615 20040 00	1	Drum, clutch compl.	70	621 45004 00	1	Grip
12	0600 12995 0	1	Ball bearing(#6201-2RU, 6201DDU)	72	621 50090 00	1	Control lever
13	00314 3200 0	1	Snapping, inner (φ 32)	73	0630 04993 0	1	Control cable
14	00315 1200 0	1	Snapping, outer (φ 12)	74	00919 1209 0	1	Clip, tube
15	602 95006 00	1	Label, serial	75	0119 05986 0	4	Socket head bolt (M5×33)
16	0734 40996 0	1	Label	77	00227 0500 0	4	Nut(M5)
18	602 15007 00	1	Case, clutch	80	602 85001 00	1	Holder
20	0119 05995 0	4	Socket head bolt (M5×18 SW)	81	602 85002 00	1	Cover, blade
22	00116 0625 0	1	Bolt ass'y (M6×25 SW, W)	82	602 85003 00	1	Cover
23	00116 0612 0	1	Bolt ass'y (M6×12 SW)	83	602 85004 00	1	Plate
* 25	625 20030 00-2	1	Clutch(Incl. 26-30)	85	602 85005 01	1	Wheel
26	625 25009 00	2	Washer	87	602 95004 00	1	Label, caution
27	625 25008 00	2	Shoe, clutch	89	0122 08996 0	1	Wing bolt
28	625 25006 00	1	Spring	91	00166 0850 0	1	Bolt (M8×50)
29	625 25004 00-1	2	Bolt, clutch	93	0119 05978 0	7	Socket head bolt (M5×12 SW, W)
30	0200 08991 0	2	Washer	94	00311 0800 0	3	Washer(M8)
⊗34	602 30100 00	1	Case, gear ass'y(Incl. *38-85)	95	00315 8000 0	1	Snapping, outer (φ 80)
* 38	602 30080 00	1	Shaft blade compl.	96	00320 0800 0	2	Spring washer(M8)
43	0600 10999 0	1	Ball bearing(#6200)	97	00228 0800 0	1	Nut (M8×5)
44	621 25003 00	2	Ball bearing(#609ZZ)	99	0140 05981 0	2	Screw(M5×20 SW)
45	625 35011 00	1	Oil seal	100	541 50011 60	2	Nut(M5)
47	00314 2400 0	1	Snapping, inner (φ 24)				
48	00314 3000 0	1	Snapping, inner (φ 30)				
49	625 35026 00	1	Snapping, outer(WR 9)				
51	625 35013 00	1	Spacer				
53	641 35006 00-1	1	Bolt, oil				
55	00113 0630 0	1	Bolt ass'y (M6×30 SW)				
56	00113 0612 0	1	Bolt ass'y (M6×12 SW)				
58	625 85000 01	1	Washer, clamp				
60	625 85036 00	1	Washer, receive				
62	625 85005 01	1	Nut				



BE26 PARTS LIST ENGINE BODY

KEY No.	PART No.	QTY.	DESCRIPTION	KEY No.	PART No.	QTY.	DESCRIPTION
* 1	531 10020 00	1	Crankcase compl. (Incl. 2-4)	37	531 60150 00	1	Cap, fuel tank ass'y
2	0440 12999 1	2	Oil seal	39	524 70010 10	1	Flywheel
3	0600 12992 0	2	Ball bearing	40	531 70040 20	1	Coil, ignition
4	531 15004 00	1	Gasket, crankcase	41	531 75001 00	1	Grommet, wire
5	524 15000 00	1	Cylinder	42	531 75002 00-1	1	Cap, spark plug
6	531 55003 00	1	Cover, cylinder	43	531 35004 00	1	Insulator
7	0650 14981 0	1	Plug, spark (NGK BM7A)	44	531 35007 00	1	Gasket, insulator
8	531 15003 00	1	Gasket, cylinder	46	531 65002 00	4	Damper
9	531 20020 00	1	Crankshaft compl.	47	531 65004 00	4	Spacer, fuel tank band
10	524 25002 00	1	Piston	48	625 95016 00	1	Label, trade mark
11	510 25010 00	2	Ring, piston	50	602 95003 00	1	Label, model
12	524 25001 00	1	Pin, piston	51	630 55005 00	1	Stand
13	0565 08998 0	2	Clip	52	00166 0616 0	1	Bolt (M6×16)
* 14	524 50010 00	1	Starter, rewind (incl. 15-22, 59)	53	0119 05995 0	9	Socket head bolt (M5×18 SW)
15	510 50151 40	1	Starter knob	55	0140 05970 0	2	Screw (M5×20)
16	524 50010 50	1	Starter rope	56	0140 05979 0	4	Screw (M5×25)
17	510 50150 40	1	Spiral spring	57	0140 05992 0	3	Screw (M5×8)
18	502 50010 10	1	Reel	58	0654 00994 0	1	Spring, plug cap
19	510 50150 50	1	Friction spring	59	524 50010 10	1	Bind screw (M5×12)
20	510 50150 20	1	Ratchet	60	0119 05978 0	2	Socket head bolt (M5×12W SW)
21	550 50010 30	1	Friction plate	61	00532 0310 1	1	Woodruff key
22	510 50150 60	1	Return spring	64	00320 0600 0	1	Spring washer
23	531 55004 00	1	Pulley, starter	66	00310 0500 0	2	Washer
24	524 55005 00	1	Housing, blower	67	0119 05983 0	1	Socket head bolt (M5×35 SW)
25	531 30070 00	1	Muffler, exhaust	70	0200 06992 0	1	Washer
26	531 35003 00	1	Cover, muffler	73	620 20060 00	1	Bolt ass'y
27	531 35006 00	1	Gasket, muffler	74	0610 08999 0	1	Needle roller bearing
28	0119 05971 0	2	Socket head bolt (M5×60)	76	0119 05973 0	2	Socket head bolt (M5×20W SW)
29	501 65003 00	1	Filter				
32	0851 2099 80	1	Tube				
33	0561 05999 0	1	Hose clamp				
34	531 65000 00	1	Tank, fuel				
36	531 60010 00	1	Strap, fuel tank unit				



**BE26 PARTS LIST
CARBURETOR**

KEY No.	PART No.	QTY.	DESCRIPTION	KEY No.	PART No.	QTY.	DESCRIPTION
* 1	524 60030 00	1	Carburetor(Incl. 2-46)	33	531 60051 20	1	Spring, ring
2	531 60054 10	1	Spring, metal cover	34	531 60054 60	1	Washer
3	531 60055 50	1	Lever, metaling	35	531 60051 10	1	Swivel
4	531 60051 50	1	Valve inlet needle	36	531 60056 10	1	Bracket, idle screw
5	531 60055 10	1	Pin, metaling lever	37	531 60053 60	1	Spring(idle adjust)
6	531 60052 30	1	Gasket	38	531 60052 60	1	Screw, idle adjuster
7	531 60052 50	1	Diaphragm ass'y metaling	39	531 60050 40	1	Air cleaner cover
8	531 60050 30	1	Cover, metaling diaphragm	40	531 60051 60	2	Screw(cleaner cover)
9	531 60056 30	1	Bracket, cable	41	531 60053 40	4	Screw, cable bracket
10	531 60054 50	1	Nut, cable adjust	42	531 60053 10	5	Screw, pump cover
11	531 60053 30	1	Screw	44	531 60053 20	2	Screw, metaling cover
12	531 60052 20	1	Gasket	46	531 60051 40	1	Ring packing
13	531 60052 40	1	Diaphragm	50	0140 04980 0	2	Screw(M4×50 W)
14	531 60055 20	1	Plate, pump				
15	531 60052 10	1	Gasket				
16	531 60050 20	1	Cover ass'y, pump				
17	531 60056 20	1	Primer pump				
18	531 60055 60	1	Bracket, primer pump				
20	531 60053 50	1	Spring, high speed needle				
21	531 60054 20	1	Needle, high speed				
22	531 60051 30	1	Stop needle				
23	531 60054 30	2	Sleeve mounting				
24	531 60057 10	1	Filter, wick				
25	531 60056 60	1	Gasket intake cap				
26	531 60056 50	1	Plate, wick				
27	531 60056 40	1	Cap, intake				
28	531 60055 40	2	Plate, mounting sleeve				
29	531 60055 30	1	Plate, cleaner				
30	531 60050 50	1	Filter spring				
31	531 60054 40	1	Air filter				
32	531 60050 60	1	Throttle valve ass'y				



**BE26 PARTS LIST
ACCESSORIES**

KEY	PART	QTY.	DESCRIPTION
No.	No.		
1	602 85000 00	1	Blade
* 3	611 90060 00	1	Tool ass'y (Incl. 4)
4	0717 04999 0	1	Wrench, socket head(M5)
6	641 90110 00	1	Protector
8	602 95005 00	1	Instruction manual

LIMITED TWO YEAR WARRANTY

Carswell Import & Marketing Associates, Inc. (hereafter CIMA), sales agent for Fuji Robin Industries, Ltd. warrants each new Robin brush cutter for twenty-four (24) months according to the following terms.

This warranty extends to the original retail purchaser only and commences on the date of original retail purchase.

Any part of Robin edger supplied by CIMA and found in the reasonable judgment of an Authorized Robin Service Center to be defective in material or workmanship will be repaired by an Authorized Robin Service Dealer without charge for parts and labor.

The Robin edger including any defective part must be returned to an Authorized Robin Service Dealer within the warranty period. The expense of delivering the Robin edger to the dealer for warranty work and the expense of returning it back to the owner after repair or replacement will be paid for by the owner.

CIMA's responsibility in respect to claims is limited to making the required repairs or replacements and no claim of breach of warranty shall be cause for cancellation or rescission of the contract of sale of any Robin edger. Proof of purchase will be required by the dealer to substantiate any warranty claim. All warranty work should be performed by an Authorized Robin Service Dealer.

This warranty is limited to ninety (90) days from the date of original retail purchase for any Robin edger that is used for rental or commercial purposes, or any other income - producing purpose.

This warranty does not cover any Robin edger that has been subject to misuse, neglect, negligence, or accident, or that has been operated in any way contrary to the operating instructions as specified in the Robin edger that is the result of improper maintenance or to any Robin edger or parts that have not been assembled or installed as specified in the Robin Operator's Manual. The warranty does not cover any Robin edger that has been altered or modified so as to adversely affect the product's operation, performance or durability or that has been altered or modified so as to change its intended use. In addition, the warranty does not extend to repairs made necessary by normal wear or by the use of parts or accessories which are either incompatible with the Robin edger or adversely affect its operation, performance or durability.

Robin reserves the right to change or improve the design of any Robin edger without assuming any obligation to modify any edger previously manufactured.

ALL IMPLIED WARRANTIES ARE LIMITED IN DURATION TO THE TWENTY-FOUR (24) MONTHS WARRANTY PERIOD OR NINETY (90) DAYS FOR EDGER USED FOR ANY INCOME - PRODUCING PURPOSE. ACCORDINGLY, ANY SUCH IMPLIED WARRANTIES INCLUDING MERCHANTABILITY, FITNESS FOR A PARTICULAR PURPOSE, OR OTHERWISE, ARE DISCLAIMED IN THEIR ENTIRETY AFTER THE EXPIRATION OF THE APPROPRIATE TWENTY-FOUR (24) MONTHS OR NINETY (90) DAYS WARRANTY PERIOD.

CIMA'S OBLIGATION UNDER THIS WARRANTY, IS STRICTLY AND EXCLUSIVELY LIMITED TO THE REPAIR OR REPLACEMENT OF DEFECTIVE PARTS, AND CIMA DOES NOT ASSUME OR AUTHORIZE ANYONE TO ASSUME FOR THEM ANY OTHER OBLIGATION. SOME STATES DO NOT ALLOW LIMITATIONS ON HOW LONG AN IMPLIED WARRANTY LASTS, SO THE ABOVE LIMITATION MAY NOT APPLY TO YOU.

CIMA ASSUMES NO RESPONSIBILITY FOR INCIDENTAL, CONSEQUENTIAL OR OTHER DAMAGES INCLUDING, BUT NOT LIMITED TO, EXPENSE FOR GASOLINE, EXPENSE OF RETURNING THE ROBIN EDGER TO AUTHORIZED SERVICE DEALER AND EXPENSE OF DELIVERING IT BACK TO THE OWNER, MECHANIC'S TRAVEL TIME, TELEPHONE OR TELEGRAM CHARGES, RENTAL OF A LIKE PRODUCT DURING THE TIME WARRANTY SERVICE IS BEING PERFORMED, TRAVEL, LOSS OR DAMAGE TO PERSONAL PROPERTY, LOSS OF REVENUE, LOSS OF THE EDGER LOSS OF TIME, OR INCONVENIENCE. SOME STATES DO NOT ALLOW THE EXCLUSION OR LIMITATION OF INCIDENTAL OR CONSEQUENTIAL DAMAGES, SO THE ABOVE LIMITATION OR EXCLUSION MAY NOT APPLY TO YOU.

This warranty gives you specific legal rights and you may also have other rights which vary from state to state.

This warranty applies to Robin edger sold by CIMA in the United States. To validate this warranty original purchaser must complete the attached Warranty Registration Form and return it within ten (10) days of purchase.

CARSWELL IMPORT
AND MARKETING ASSOCIATES, INC.
WINSTON - SALEM, NORTH CAROLINA 27115

Fuji Robin Industries, Ltd.
Shibuya-ku, Tokyo, Japan

WARRANTY SERVICE

Warranty service can be performed by an Authorized Robin Service Dealer regardless of whether the consumer purchased the Robin product originally from that dealer. However, we recommend you first contact the original dealer who sold you the product. Remember, it is your responsibility to deliver your Robin product along with proof of purchase to the dealer within the warranty period, and all work must be performed by an Authorized Robin Service Dealer.

Example of Parts and Service not covered by Warranty

Normal service requirements occurring during the warranty period such as carburetor or ignition adjustment.

Normal service over and above repair or replacement of defective parts.

Repair or maintenance service due to normal wear, improper maintenance, misuse, neglect, negligence, accident, also alternations or modifications which adversely affect product's performance, durability, or change their intended use.

Repairs or maintenance made necessary due to use of parts or accessories which are not compatible with Robin products or adversely affect its operation, performance, or durability.

Products not operated or maintained in accordance with the Instruction Manual.

Normal cleaning, lubrication, adjustments, or replacement of such items as spark plugs, filters, ignition points, etc.

Expense of delivering the product to an Authorized Service Dealer or of returning such products, or mechanics travel time, or cost of any rental of a like product during the period warranty service is being performed.

Warranty applies only to original retail purchaser.

Owner's Obligation and Responsibility —

It is the responsibility of the owner to provide for normal maintenance service and replacement of service items and to maintain all components in proper adjustment. These are not considered defects in material or workmanship. Individual operation and application determine the need for normal maintenance service.

Robin Warranty Registration

Owner's Name _____

Address _____

_____ City State Zip

Dealer's Name _____

Address _____

_____ City State Zip

Date of Purchase _____

Model No. _____ Serial No. _____

This Registration Form must be completed and returned within ten (10) days of purchase.

(Detach and Mail)

From _____

PLACE
STAMP
HERE

CMA CARSWELL IMPORT &
MARKETING ASSOCIATES, INC.
P.O. Box 4169, Winston-Salem, N.C. 27115



FUJI ROBIN INDUSTRIES LTD.